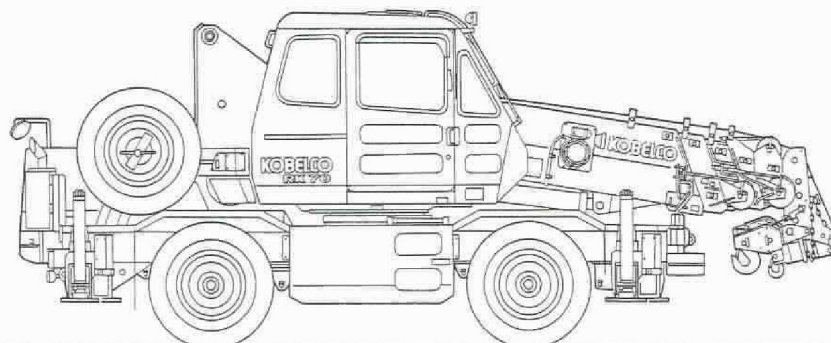




# MINI ROUGH TERRAIN CRANE RK70



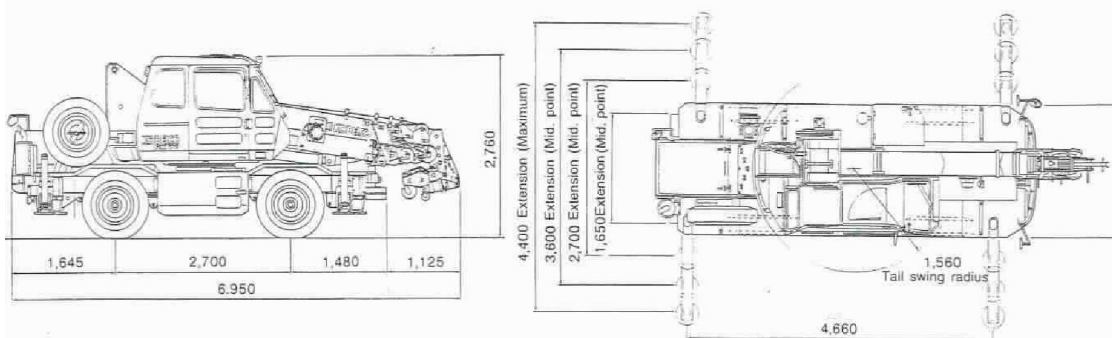
## SPECIFICATIONS

Max. Lifting capacity: 7.0 metric tons x 2.5 meters  
Max. Boom Length: 21.2 meters



# Dimensions RK70

Unit: m



## Exit Width

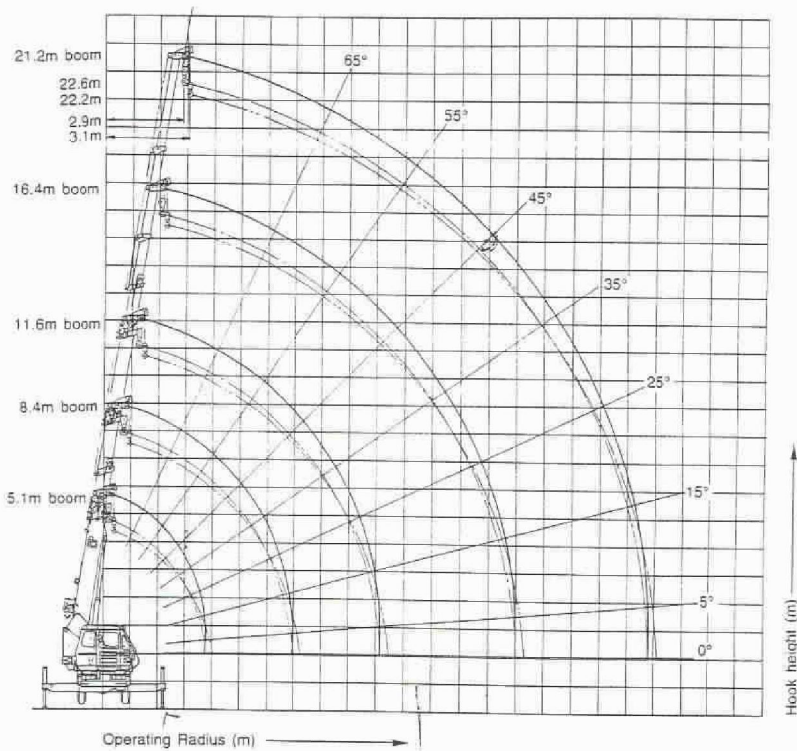
Unit: mm

Carrier					
<b>4-Drive Steering</b>		<b>2-Drive Steering</b>		<b>2-Drive Steering (Rear)</b>	
to the left	to the right	to the left	to the right	to the left	to the right
3,263	3,260	3,939	3,944	3,970	3,965
3,263	3,280	3,939	3,944	3,970	3,965
Carrier with Boom					
<b>4-Drive Steering</b>		<b>2-Drive Steering</b>		<b>2-Drive Steering (Rear)</b>	
to the left	to the right	to the left	to the right	to the left	to the right
3,413	3,471	3,972	4,053	3,970	3,965
3,413	3,471	3,972	4,053	3,970	3,965

Note: RK70 can be driven with no boom overhang.



### Working Ranges





With outrigger in 4.4m position — 360° working area

(METRICKON)

Operating radius in meters	Boom length in meters				
	5.1	8.4	11.6	16.4	21.2
1.0	7.00	4.90			
1.5	7.00	4.90	4.90		
2.0	7.00	4.90	4.90		
2.5	7.00	4.90	4.90	3.90	
3.0	6.10	4.90	4.90	3.90	2.00
3.5	5.30	4.90	4.90	3.90	2.00
4.0	4.90 (3.7m)	4.50	4.50	3.60	2.00
4.5		3.85	3.87	3.30	2.00
5.0		3.33	3.37	3.05	2.00
5.5		2.95	2.97	2.82	1.85
6.0		2.62	2.66	2.56	1.70
7.0		2.15 (6.9m)	2.14	2.15	1.50
8.0			1.70	1.84	1.40
9.0			1.40	1.60	1.23
10.0			1.20	1.40	1.09
11.0			1.16 (10.2m)	1.20	0.98
12.0				1.02	0.89
13.0				0.85	0.82
14.0				0.69	0.75
15.0				0.55	0.69
16.0					0.59
17.0					0.51
18.0					0.43
19.0					0.36
20.0					0.35 (19.8m)
21.0					
Min. angle	—	—	—	—	—